



[Register](#) [Login](#) [Contribute](#) [Subscribe](#) [RSS](#)

[Howtos](#) [Forums](#) [Contribute](#) [Subscribe](#) [ISPConfig](#) [FAQForge](#) [News](#)

### Options For This Howto

- [Free Support](#)
- [Paid Support](#)

### Navigation

[\[+\] Expand](#) [\[-\] Collapse](#)

- Howtos
  - Linux
    - Android
    - CentOS
    - Debian
    - Fedora
    - Kernel
    - Mandriva
    - PCLinuxOS
    - SuSE
    - Ubuntu
  - Web Server
    - Apache
    - Cherokee
    - Lighttpd
    - nginx
  - Backup
  - Control Panels
    - ISPConfig
  - DNS
    - BIND
    - MyDNS
    - PowerDNS
    - djbdns
  - Desktop
  - Email
    - Anti-Spam/Virus
    - Postfix
  - FTP
    - High-Availability
  - Monitoring
    - MySQL
  - Programming
    - C/C++
    - PHP
  - Samba
  - Security
    - Anti-Spam/Virus
  - Storage
  - Virtualization
    - KVM
    - OpenVZ
    - VMware
    - VirtualBox
    - Xen
  - Other
    - FreeBSD
    - Commercial
- Mini-Howtos
- Forums
- Contribute
- Subscription
- Login
- Site Map/RSS Feeds

### User login

Username:

Password:

Remember Me?

[Create a new account](#)  
[Request new password](#)

### Facebook



HowtoForge **Suka** 8.

### Who's online

There are currently 7 users and 3755 guests online.

### HowtoForge Forums

- [Email Server - Folder Scan and copy to another](#)
- [ISPConfig does not create domains, FTP users...](#)
- [ISPCONFIG Ubuntu failed Cluster](#)

[node reinstall ...](#)  
[postfix ispcnfig](#)  
[rapidssl Root CA not found](#)  
[Perfect Server, OpenSUSE 13.1 - Apache on ...](#)  
[Remote API Debugging](#)  
[How to reassign domain to different user when ...](#)  
[ISPCnfig 3, current version, spamcheck](#)  
[phpmyadmin complains about permissions and ...](#)  
[Apache won't run after ISPCnfig upgrade](#)

### News

[iEdit - A Powerful Java-Based Editor for Programmers](#)  
[How to install Xen hypervisor on unused old hardware](#)  
[Kids, Computers & Wasting Time...](#)  
[Thin Mini-ITX boards offer Atom and Core options](#)  
[11 Linux Games Up to 86% Discount During This Steam Weeklong Deal](#)  
[OpenStacks developers make plans for the next release](#)  
[Finding the sweet spot for data between privacy and open](#)  
[Council Elections Interview with Rex Dieter \(rdietier\)](#)  
[Adobe Brings Open Source Veteran on Board to Lead Mobile](#)  
[10 Great Plasma Widgets for KDE with Screenshots](#)

[more](#)

### Recent comments

[Re: Postfix/amavisd: Connection refused](#)  
 8 hours 2 min ago  
[Automatically forward to HTTPS](#)  
 20 hours 6 min ago  
[Some programs during installation not found ?](#)  
 1 day 30 min ago  
[Thanks. Two hours work and](#)  
 1 day 8 hours ago  
[Support for mod\\_wsgi](#)  
 2 days 1 hour ago  
[https](#)  
 2 days 21 hours ago  
[Re: Re: roundcube error](#)  
 3 days 11 hours ago  
[THANK YOU!!!!](#)  
 3 days 17 hours ago  
[Step 10: Installation apache2\\_mod\\_fastcgi](#)  
 3 days 18 hours ago  
[Correction to step 15](#)  
 3 days 19 hours ago

### Newsletter

**Subscribe to HowtoForge Newsletter** and stay informed about our latest HOWTOs and projects.

(To unsubscribe from our newsletter, visit this [link](#).)

[English](#) | [Deutsch](#) | [Site Map/RSS Feeds](#) | [Advertise](#)

You are here: [Home](#) » [Howtos](#) » [Linux](#) » [Samba Server Configuration In OpenSuSe 13.1](#)

## Samba Server Configuration in OpenSuSe 13.1

Want to support HowtoForge? Become a [subscriber!](#)

Submitted by [howtoforge](#) ([Contact Author](#)) ([Earnings](#)) on Mon, 2014-06-02 12:20. :: [Linux](#) | [SuSE](#) | [Samba](#)

[8+1](#) [1](#)

[Like](#) [Share](#) [16](#)

[Tweet](#) [26](#)

Samba Server Configuration in OpenSuSe 13.1

Version 1.0  
 Author: Srijan Kishore  
 Last edited 29/May/2014

This guide explains how to configure samba server in Opensuse 13.1 with anonymous & secured samba servers. Samba is an Open Source/Free Software suite that provides seamless file and print services to SMB/CIFS clients. Samba is freely available, unlike other SMB/CIFS implementations, and allows for interoperability between Linux/Unix servers and Windows-based clients.

I do not issue any guarantee that this will work for you!

## 1 Preliminary Note

I have fresh installed Opensuse 13.1 server, on which I am going to install the samba server. Off-course you need to have one windows machine to check the samba server that must be reachable with the Opensuse 13.1 server. My Opensuse 13.1 server have hostname `server1.example.com` & IP as `192.168.0.100`

You can have your opensuse 13.1 server installed from the starting five chapters of the [tutorial](#).

Note:

- The Windows machine must be on same workgroup. To check the value in windows machine run the command at cmd prompt

```
net config workstation
```

It will be like this

```
C:\Windows\system32\cmd.exe
Microsoft Windows [Version 6.1.7601]
Copyright (c) 2009 Microsoft Corporation. All rights reserved.

C:\Users\houthforge>net config workstation
Computer name                \HOUTHFORGE-PC
Full Computer name          houthforge-PC
User name                    houthforge

Workstation status on
NetBI_Tcpip_{BB3F3E77-B814-4B95-BC15-245FBE64C336} (880027F8204E)
Software version            Windows 7 Ultimate
Workstation domain          WORKGROUP
Logon domain                 houthforge-PC

COM Open Timeout (secs)     0
COM Send Count (Bytes)      16
COM Send Timeout (secs)     250
The command completed successfully.

C:\Users\houthforge>
```

Click to enlarge

Your windows machine must be at same Workstation domain as in Opensuse 13.1 server, i.e. `WORKGROUP` in my case.

- To make the windows machine reachable in windows proceed like this. In the run terminal & add the entry of your server IP address

```
notepad C:\Windows\System32\drivers\etc\hosts
```

In my case it was like this, just save the values.

```
[...]
192.168.0.100  server1.example.com  opensuse 13.1
```

## 2 Anonymous samba sharing

First I will explain the methodology to install the samba with the anonymous sharing. To install samba run,

```
zypper install samba samba-client
```

It will ask for your input

```
server1:~ # zypper install samba samba-client
Loading repository data...
Reading installed packages...
Resolving package dependencies...

Problem: patterns-openSUSE-minimal_base-conflicts-13.1-13.6.1.x86_64 conflicts with samba-client provided by samba-client-4.1.6-3.18.1.x86_64
Solution 1: Following actions will be done:
do not install samba-client-4.1.6-3.18.1.x86_64
do not install samba-4.1.6-3.18.1.x86_64
Solution 2: deinstallation of patterns-openSUSE-minimal_base-conflicts-13.1-13.6.1.x86_64

Choose from above solutions by number or cancel [1/2/c] (c):<--2

Resolving dependencies...
Resolving package dependencies...

The following 41 NEW packages are going to be installed:
cifs-utils cups-libs libarchive13 libdcerpc0 libdcerpc-binding0 libfam0
libgensec0 libjbig2 libjpeg8 libldb1 libndr0 libndr-krb5pac0 libndr-nbt0
libndr-standard0 libnetapi0 libpdb0 libregistry0 libsamba-credentials0
libsamba-hostconfig0 libsamba-util0 libsambd0 libsmbclient0 libsmbclient-raw0
libsmbconf0 libsmbldap0 libtaloc2 libtdb1 libtevent0 libtevent-util0
libtiff5 libwbclient0 perl-Crypt-SmbHash perl-Digest-MD4 perl-XML-LibXML
pytalloc samba samba-client samba-libs yast2-kerberos-client
yast2-samba-client yast2-samba-server

The following package is going to be REMOVED:
patterns-openSUSE-minimal_base-conflicts

41 new packages to install, 1 to remove.
Overall download size: 11.1 MiB. After the operation, additional 32.4 MiB will
```

```
be used.  
Continue? [y/n/? shows all options] (y): <-y
```

It will install samba with Version 4.1.6-3.18.1-3208-SUSE-oS13.1-x86\_64

Now to configure samba edit the file `/etc/samba/smb.conf` before making changes I will make the backup of original file as `/etc/samba/smb.conf.bak`

```
mv /etc/samba/smb.conf /etc/samba/smb.conf.bak
```

Further give the entries like this

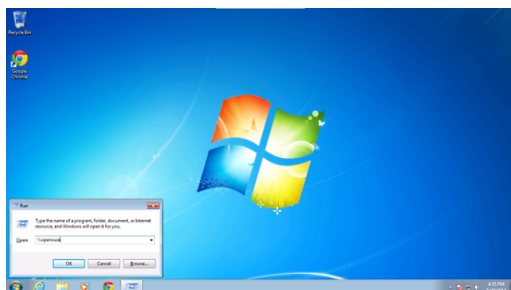
```
vi /etc/samba/smb.conf
```

```
[global]  
workgroup = WORKGROUP  
passwd backend = tdbsam  
server string = Samba Server %v  
netbios name = opensuse  
security = user  
map to guest = bad user  
dns proxy = no  
#===== Share Definitions =====  
[Anonymous]  
path = /samba/anonymous  
browsable = yes  
writable = yes
```

```
mkdir -p /samba/anonymous
```

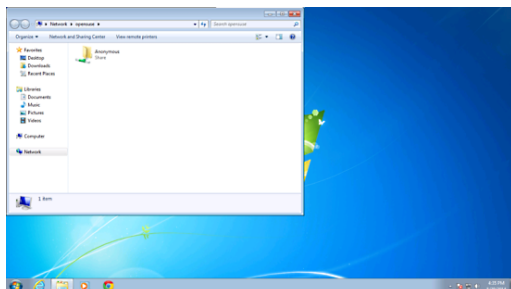
```
systemctl restart smb.service
```

Now you can access the opensuse 13.1 sharing in windows as follows:

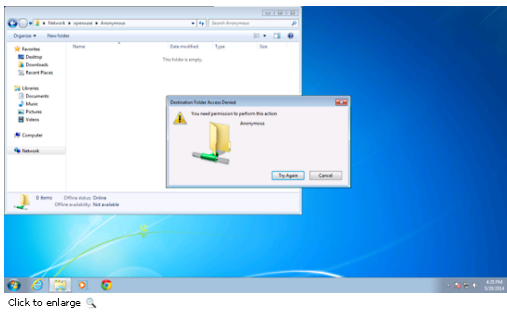


Click to enlarge

From windows machine just browse the folder& try to create a text file, but you will get an error of permission denied.



Click to enlarge



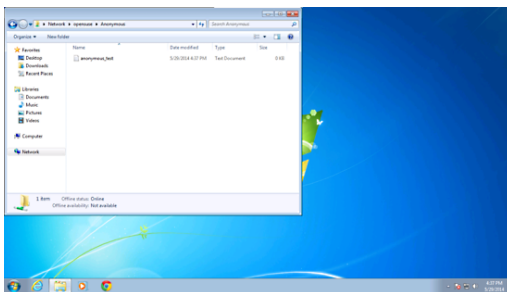
Check the permission for the shared folder.

```
root@server1:~# ls -l /samba/
total 4
drwxr-xr-x 2 root root 4096 May 29 18:17 anonymous
root@server1:~#
```

To allow anonymous user give the permissions as follows;

```
root@server1:~# cd /samba
root@server1:/samba# chmod -R 0777 anonymous/
root@server1:/samba# ls -l
total 4
drwxrwxrwx 2 root root 4096 May 29 18:17 anonymous
root@server1:/samba#
```

Now anonymous user can browse & create the folder contents.



You can cross check the content at server also.

```
server1:/samba # ls -l anonymous/
total 0
-rwxr--r-- 1 nobody nobody 0 May 29 16:37 anonymous_test.txt
server1:/samba #
```

### 3. Secured samba server

For this I will create a group `smbgrp` & user `srijan` to access the samba server with proper authentication

```
groupadd smbgrp

useradd srijan -G smbgrp

smbpasswd -a srijan
```

```
server1:~ # smbpasswd -a srijan
New SMB password:
Retype new SMB password:
Added user srijan.
server1:~ #
```

Now create the folder viz `secured` in the `/samba` folder & give permissions like this

```
mkdir -p /samba/secured
cd /samba
chmod -R 0770 secured/
```

Again edit the configuration file as :

```
vi /etc/samba/smb.conf
```

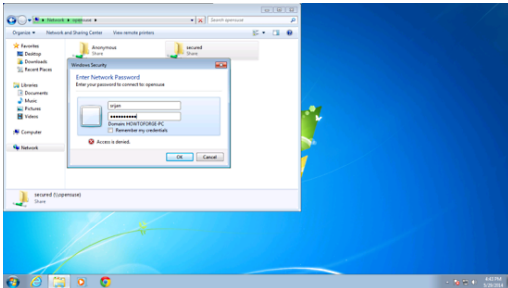
```
[secured]
path = /samba/secured
valid users = @smbgrp
guest ok = no
writable = yes
browsable = yes
```

```
systemctl restart smb.service
```

Further to cross-check the settings check as follows:

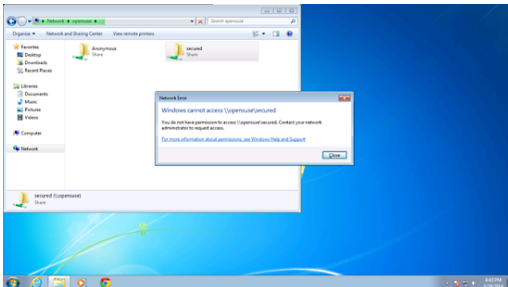
```
server1:~ # testparm
Load smb config files from /etc/samba/smb.conf
rlimit_max: increasing rlimit_max (1024) to minimum Windows limit (16384)
Processing section "[Anonymous]"
Processing section "[secured]"
Loaded services file OK.
Server role: ROLE_STANDALONE
Press enter to see a dump of your service definitions
```

Now at windows machine check the folder now with the proper credentials



Click to enlarge

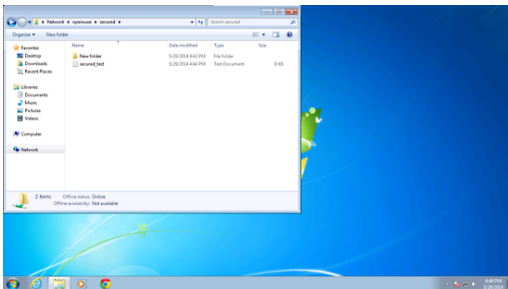
You will again face the issue of permissions to give write permission to the user *srijan* do:



Click to enlarge

```
cd /samba
chown -R srijan:smbgrp secured/
```

Now samba user *srijan* have permissions to write in the folder. Cheers you have done with samba server in Opensuse 13.1



Click to enlarge

Copyright © 2014 howtforge  
All Rights Reserved.

1 Like Share 16 Tweet 26

[add comment](#) | [view as pdf](#) | [print](#)

### Related Tutorials

- [Samba Server Install on Debian 7 \(Wheezy\)](#)
- [SAMB \(Domaincontroller\) Server For Small Workgroups With Ubuntu 6.10](#)
- [SAMB \(Domaincontroller\) Server For Small Workgroups With Ubuntu 7.10](#)
- [Setting Up A Standalone Storage Server With GlusterFS And Samba On Debian Squeeze](#)
- [SAMB \(Domain Controller\) Server For Small Workgroups With Ubuntu 5.10 "Breezy Badger"](#)

**!** Please do not use the comment function to ask for help! If you need help, please use our [forum](#). Comments will be published after administrator approval.

---

[Howtos](#) | [Mini-Howtos](#) | [Forums](#) | [News](#) | [Search](#) | [Contribute](#) | [Subscription](#)  
[Site Map/RSS Feeds](#) | [Advertise](#) | [Contact](#) | [Disclaimer](#) | [Imprint](#)



Copyright © 2014 HowtoForge - Linux Howtos and Tutorials  
All Rights Reserved.