





- [Home](#)
- [About Us](#)
- [Advertising](#)
- [Sitemap](#)
- [Privacy](#)
- [Contact Us](#)

Page Navigation



-  **Unixmen**
[Home](#)
-  **News**
[Today](#)
-  **Linux**
[Distributions](#)
-  **Tutorials**
[Knowledge Base](#)
-  **Open source**
[News](#)
-  **Android**
[News](#)
-  **Frequently**
[Asked Question](#)
-  **Ask**
[Unixmen](#)

Category Navigation

6590 views 3 likes [1 comment](#)

Posted August 8, 2013

Install and Configure Samba Server on OpenSUSE 13.1

by SK

Share this Article:



0



0



7



0



0



0

[Samba](#) is a free and open-source software package that provides seamless file and print services to SMB/CIFS clients. Samba is freely available, unlike other SMB/CIFS implementations and allows for interoperability between Linux/Unix servers and Windows OS-based clients. Using Samba we can easily share files and folders between GNU/Linux and Windows OS systems.

In this tutorial we are going to implement Samba server on OpenSUSE 13.1.

Install Samba

Login as root user:

```
> su
```

Install Samba with following command:

```
# zypper install samba*
```

Configure Fully Accessed Anonymous Share

Let us create directory **/share1** and set full permission. Anybody can access this share:

```
# mkdir /share1  
# chmod -R 777 /share1/
```

Open up Samba configuration file **/etc/samba/smb.conf** file:

```
# vi /etc/samba/smb.conf
```

And edit as follows;

Make sure that you have the following line in **[global]** section. If not found, just add it as shown below:

```
[...]  
passdb backend = tdbsam  
[...]
```

Scroll down further and add this share details at the bottom of the Samba configuration file:

```
[Full Share]
    path = /share1
    writable = yes
    browsable = yes
    guest ok = yes
    guest only = yes
    create mode = 0777
    directory mode = 0777
```

Save and close the file. Enable and start Samba service to save the changes:

```
# systemctl enable smb.service
# systemctl enable nmb.service

# systemctl start smb.service
# systemctl start nmb.service
```

Test Samba Configuration

Execute the following command to verify the Samba configuration file. It displays the errors if we have any:

```
# testparm
```

The above command will display the output as shown below:

```
Load smb config files from /etc/samba/smb.conf
rlimit_max: increasing rlimit_max (1024) to minimum Windows limit (16384)
Can't find include file /etc/samba/dhcup.conf
Processing section "[homes]"
Processing section "[profiles]"
Processing section "[users]"
Processing section "[groups]"
Processing section "[printers]"
Processing section "[print$]"
Processing section "[Full Share]"
Loaded services file OK.
Server role: ROLE_STANDALONE
Press enter to see a dump of your service definitions

[global]
    map to guest = Bad User
    printcap name = cups
    logon path = \\%L\profiles\.msprofile
    logon drive = P:
    logon home = \\%L\%U\.9xprofile
    usershare allow guests = Yes
    idmap config * : backend = tdb
    cups options = raw

[homes]
    comment = Home Directories
    valid users = %S, %D%w%S
```

```
read only = No
inherit acls = Yes
browseable = No
```

[profiles]

```
comment = Network Profiles Service
path = %H
read only = No
create mask = 0600
directory mask = 0700
store dos attributes = Yes
```

[users]

```
comment = All users
path = /home
read only = No
inherit acls = Yes
veto files = /aquota.user/groups/shares/
```

[groups]

```
comment = All groups
path = /home/groups
read only = No
inherit acls = Yes
```

[printers]

```
comment = All Printers
path = /var/tmp
create mask = 0600
printable = Yes
print ok = Yes
browseable = No
```

[print\$]

```
comment = Printer Drivers
path = /var/lib/samba/drivers
write list = @ntadmin, root
force group = ntadmin
create mask = 0664
directory mask = 0775
```

[Full Share]

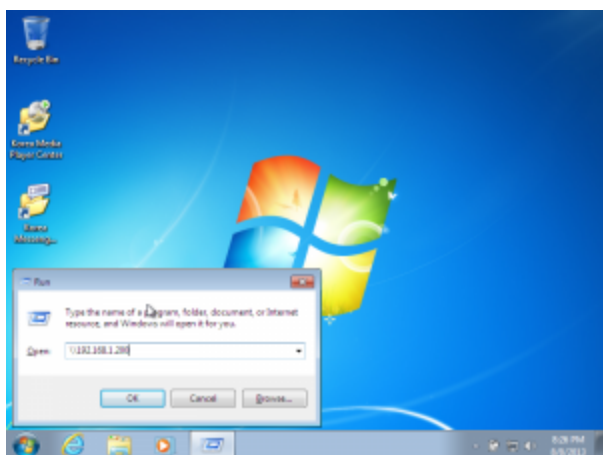
```
path = /share1
read only = No
create mask = 0777
directory mask = 0777
guest only = Yes
guest ok = Yes
```

I don't want to mess up iptables, so i turned it off:

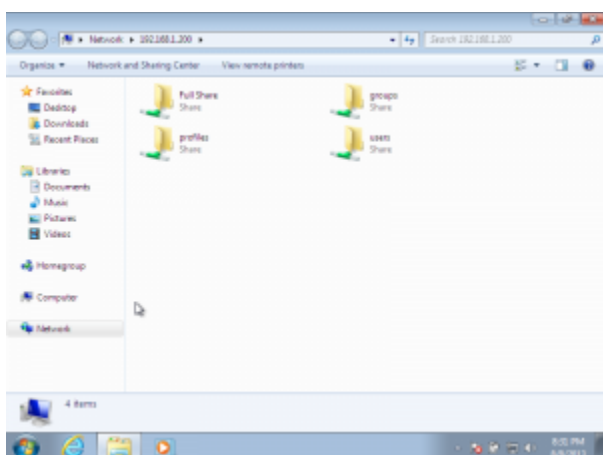
```
# rcSuSEfirewall2 stop
```

Test Anonymous Samba Share on Windows OS Client

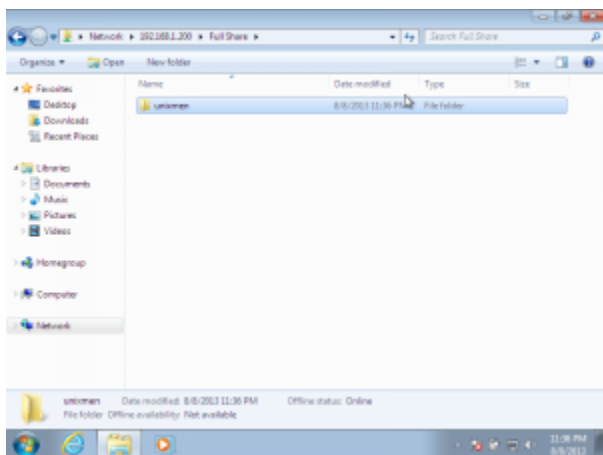
Login to Windows OS machine and go to **Start** -> **Run**. Enter the IP address of your Samba server.



Now you'll be able to access the fully accessed Samba share from your Windows OS clients.



Create some files and folders inside the share. In my case, I created a folder called **unixmen** in my fully accessed anonymous Samba share called **Full Share**.



Create an Authenticated Share

Let us create a Samba user called **sk** under Samba group called **smbgroup**:

```
# useradd sk  
# passwd sk
```

```
# groupadd smbgroup
# usermod -a -G smbgroup sk
```

Now assign the user **sk** to Samba user database with following command:

```
# smbpasswd -a sk
New SMB password:
Retype new SMB password:
Added user sk.
```

Create a new share called **/share2** and assign this share to **smbgroup**, so that the users of **smbgroup** can access the **/share2** directory:

```
# mkdir /share2
# chmod -R 755 /share2/
# chown -R sk:smbgroup /share2
```

Add the above **/share2** directory details in Samba configuration file as shown below;

Open up samba configuration file:

```
# vi /etc/samba/smb.conf
```

Add the **/share2** details at the end:

```
[secure]
    path = /share2
    writable = yes
    browsable = yes
    guest ok = no
    valid users = @smbgroup
```

Restart Samba service to save the changes:

```
# systemctl restart smb.service
# systemctl restart nmb.service
```

Now test the configuration file with following command:

```
# testparm
```

You may see the following like output:

```
Load smb config files from /etc/samba/smb.conf
rlimit_max: increasing rlimit_max (1024) to minimum Windows limit (16384)
Can't find include file /etc/samba/dhcp.conf
Processing section "[homes]"
Processing section "[profiles]"
Processing section "[users]"
Processing section "[groups]"
Processing section "[printers]"
Processing section "[print$]"
Processing section "[Full Share]"
Processing section "[secure]"
```

```
Loaded services file OK.  
Server role: ROLE_STANDALONE  
Press enter to see a dump of your service definitions
```

[global]

```
map to guest = Bad User  
printcap name = cups  
logon path = \\%L\profiles\.msprofile  
logon drive = P:  
logon home = \\%L\%U\.9xprofile  
usershare allow guests = Yes  
idmap config * : backend = tdb  
cups options = raw
```

[homes]

```
comment = Home Directories  
valid users = %S, %D%W%S  
read only = No  
inherit acls = Yes  
browseable = No
```

[profiles]

```
comment = Network Profiles Service  
path = %H  
read only = No  
create mask = 0600  
directory mask = 0700  
store dos attributes = Yes
```

[users]

```
comment = All users  
path = /home  
read only = No  
inherit acls = Yes  
veto files = /aquota.user/groups/shares/
```

[groups]

```
comment = All groups  
path = /home/groups  
read only = No  
inherit acls = Yes
```

[printers]

```
comment = All Printers  
path = /var/tmp  
create mask = 0600  
printable = Yes  
print ok = Yes  
browseable = No
```

[print\$]

```
comment = Printer Drivers  
path = /var/lib/samba/drivers  
write list = @ntadmin, root  
force group = ntadmin  
create mask = 0664  
directory mask = 0775
```

[Full Share]

```
path = /share1
```

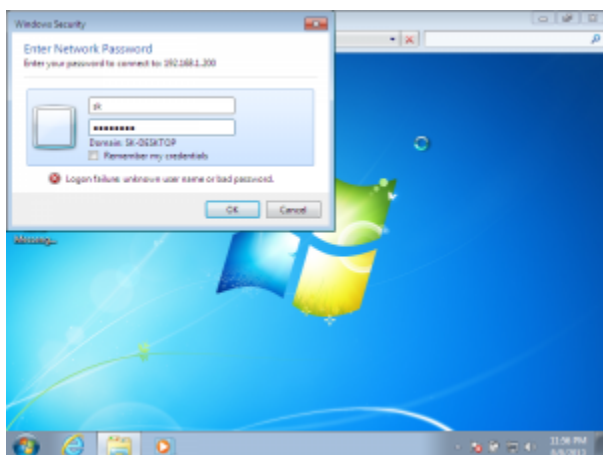
```
read only = No
create mask = 0777
directory mask = 0777
guest only = Yes
guest ok = Yes
```

[secure]

```
path = /share2
valid users = @smbgroup
read only = No
```

Test Authenticated Share on Windows OS Client

Now go to the Windows OS client and check the authenticated share. It will ask you to enter username and password to access the Samba shares. Enter the username and password that you have created earlier. You're done!



That's it. Now you'll be able to access the Samba shares.

For questions please refer to our Q/A forum at : <http://ask.unixmen.com/>

An advertisement for Pandorafms. At the top, the logo "PANDORAFMS" is displayed in white on a green background. Below the logo, a computer monitor shows a dashboard with various data points and charts. To the right of the monitor, a green line graph is shown above the text "EVERYTHING IS ABOUT MONITORING". At the bottom, a green button with white text says "TRY IT NOW FOR FREE".

Share this Article:



0



0



7



0



0



0

3 people like this

[Frequently Asked Questions](#), [Linux distributions](#), [Linux tutorials](#), [opensource](#), [Software](#), [Suse](#)

[opensusesamba](#)



SK

Senthilkumar, aka SK, is a Linux enthusiast, FOSS Supporter & Linux Consultant from Tamilnadu, India. A passionate and dynamic person, aims to deliver quality content to IT professionals and loves very much to write and explore new things about Linux, Open Source, Computers and Internet.

Recommended for you

[opensusesamba](#) [Frequently Asked Questions](#) [Linux distributions](#)



[OpenSUSE Forums Hacked; Another vBulletin Attack!](#)



[Patterns: A Quick Introduction](#)



[Install VirtualBox 4.3 on OpenSUSE 13.1](#)



[New OpenSUSE Raspberry Pi Image](#)



[Monitor Statistics of OpenSUSE Systems with Saidar](#)



[OpenSUSE 12.3 Behind a Proxy](#)

Comments for this thread are now closed.



AROUND THE WEB

Students From Indonesia Are Getting Online Translation Jobs CrayNews

Eastbay Presents Preparation Nation: Crespi Stack

A Year with Google Glass Will Turn You Into an Obnoxious Monster World News

Advertisers: How to Find Your Engaged Audience Disqus

ALSO ON UNIXMEN

WHAT'S THIS?

Install PXE Server On CentOS 7 4 comments

How To Disable Unity Online Search Feature On Ubuntu 14.10 2 comments

[QUICK TIP] Fix VLC Player Opening in New Windows 1 comment

Install And Configure Samba Server In CentOS 7 1 comment

1 Comment **unixmen**

Login ▾

Sort by Newest ▾

Share Favorite



Xiao · 10 months ago

Should excecuate "sudo logprof" otherwise Samba won't start under openSUSE13.1.

· Share >

[Subscribe](#)

[Add Disqus to your site](#)

[Privacy](#)

Advetise here !!!

Donate to Unixmen

We need your assistance to stay live and contribute more articles on Unix.



For questions please refer to our Q/A forum at : <http://ask.unixmen.com/>

- Like us on Facebook



Unixmen

Like

49,739 people like Unixmen.



Facebook social plugin

- [Unixmen Latest Tweets](#)

Tweets

Follow



Unixmen @unixmen

2h

Install LEMP Server (Nginx, MariaDB, and PHP-FPM) On openSUSE 13.2/13.1: LEMP is a combination of operating sy... bit.ly/1wSEQkC



Unixmen @unixmen

4h

Install LAMP Server (Apache, MariaDB, and PHP) On openSUSE 13.2/13.1: LAMP is a combination of operating syste... bit.ly/1vIMvwm
Expand



Unixmen @unixmen

5h

How To Install Django In Ubuntu: Many python developers have used django or at least heard about it. Django is... bit.ly/1qjAFSd
Expand



Unixmen @unixmen

17 Nov

Ejabberd – A Cross Platform, Open Source Instant Messaging Server: Introduction ejabberd is a free, Open Sourc... bit.ly/1xOZqpT
Expand



Unixmen @unixmen

15 Nov

RemoteBox – A Graphical Client To Manage VirtualBox

Tweet to @unixmen

Unixmen



Ikuti

+1

+ 7.765

Top 10 Recent Comments



Tom Chun

Reading package lists... Done Building dependency tree Reading state information.....



hansyrobinson

"I just got paid \$7500 working off my computer this month. And if



you think...



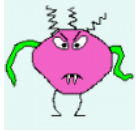
sharmavijay86

HI sk , Can you brief here how to use ldap as user id password...



Andres Gonzalez

I like this article, I like to know how to connect ejabberd with postfix, ispconfig...



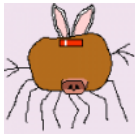
guterkerl

Why do you insist on installing outdated software? Even in your tutorial for Ubuntu 14.04...



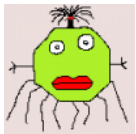
starskeptic

Google is your friend...



Ertan ERBEK

I test before that is really good work also programmer team waiting request from user...



Homer

I just backed up my /home and reinstalled from scratch. A script put back my...

Favorite Links



- [Ubuntu Linux Tutorials, Howtos, Tips and News.](#)



- [LinuxHost: Webdesing, SEO & Internet Marketing.](#)



- [News on Free/libre and Open Source software.](#)

Unixmen Archives

Select Month

Creative Commons License



This work is licensed under a [Creative Commons Attribution-NonCommercial 4.0 International License](#).

[8924](#)

[0](#)

[7763](#)

[46](#)

-
-

[android](#) [browser](#) [Centos](#) [Debian](#) [Fedora](#) [games](#) [gaming](#) [gnome](#) [Linux](#) [linux distribution](#)

[LinuxMint](#) [lucid](#) [lynx](#) [news](#) [opensource](#) [security](#) [server](#) [software](#) [ubuntu](#)

Copyright © 2014 Unixmen, All Rights Reserved.

Website Design and Maintained by [Anblik](#).

Area Dedicated for Unixmen Sponsors

