

Create SSL Certificates In OpenSUSE 12.3

By **M.el Khamlichi**



This article will help you to secure your Apache server by creating SSL certificates. Some p may need this to Secure their apache server. Please follow the bellow steps.

Create a random data file

```
# cat /dev/random > randomfile
```

Create key pair

```
# openssl genrsa -des3 -out server.key -rand randomfile
```

Sign the created Public Key and create a digital certificate

```
# openssl req -new -x509 -key server.key -out server.crt
```

Answer the questions and then copy the Public Key and digital certificate to the bellow mer folders.

```
# cp server.key /etc/apache2/ssl.key/  
# cp server.crt /etc/apache2/ssl.crt/
```

Configure Apache to use OpenSSL (Optional)

Edit the `/etc/sysconfig/apache2` file.

```
APACHE_START_TIMEOUT="10"  
APACHE_SERVER_FLAGS="SSL"
```

copy `/etc/apache2/vhost.d/vhost-ssl.template` to `/etc/apache2/vhost.d/vhost-s:`

```
# cp /etc/apache2/vhost.d/vhost-ssl.template /etc/apache2/vhost.d/vhost-ssl
```

Configure the main site to use HTTPS

Edit the `/etc/apache2/default-server.conf` file and add **Include `/etc/apache2/vhos`**
`/*.conf` line in that file.

```
Include /etc/apache2/conf.d/*.conf  
Include /etc/apache2/vhosts.d/*.conf
```

Edit `/etc/apache2/vhost.d/vhost-ssl.conf` file as shown below:

```
<IfDefine SSL>  
<IfDefine !NOSSL>  
<VirtualHost *:443>  
    DocumentRoot "/srv/www/htdocs"  
    ServerName localhost:443  
    ErrorLog /var/log/apache2/error_log  
    TransferLog /var/log/apache2/access_log  
    SSLEngine on  
    SSLProtocol all -SSLv2  
    SSLCipherSuite HIGH:MEDIUM:!aNULL:!MD5  
    SSLCertificateFile /etc/apache2/ssl.crt/server.crt  
    SSLCertificateKeyFile /etc/apache2/ssl.key/server.key
```

```

<FilesMatch "\.(cgi|shtml|phtml|php)$">
SSLOptions +StdEnvVars
</FilesMatch>
<Directory "/srv/www/cgi-bin">
SSLOptions +StdEnvVars
</Directory>
BrowserMatch "MSIE [2-5]" \
nokeepalive ssl-unclean-shutdown \
downgrade-1.0 force-response-1.0
CustomLog /var/log/apache2/ssl_request_log ssl_combined
</VirtualHost>
</IfDefine>
</IfDefine>

```

Restart apache

```

# /etc/init.d/apache2 restart
redirecting to systemctl restart apache2
Enter SSL pass phrase for localhost:443 (RSA): ****

```

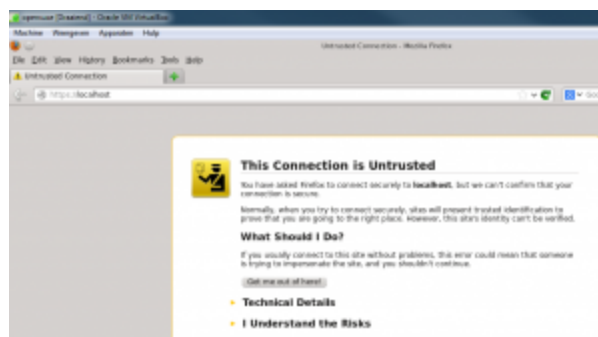
Check if the Port Listening

```

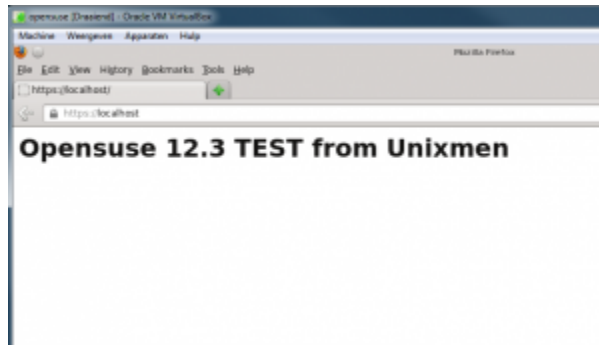
# netstat -an | grep 443
tcp 0 0 :::443 :::* LISTEN
linux-j9hf:/etc/apache2/vhosts.d #

```

Navigate to **https://IP-Address/** from your browser.



Click on **I understand the risks** link. Now you will get the output as shown below.



That's it.

You Might Also Like



1 Odd Method 'Restores' Your 20/20 Vision. Try This



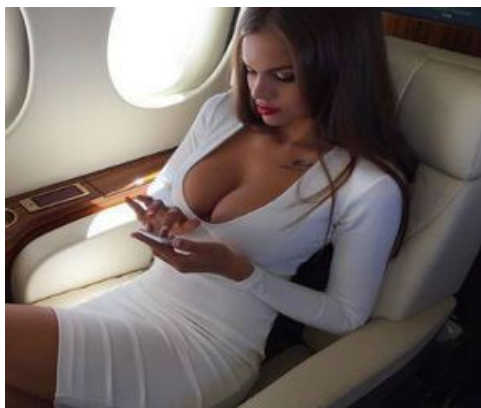
Forget Pepper Spray, All Women Need This



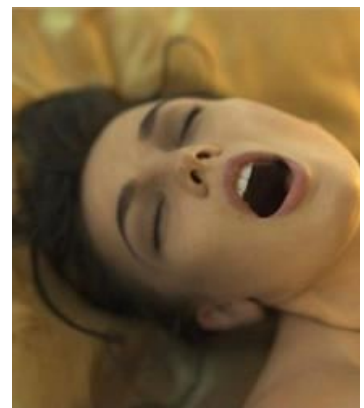
What Lies Have Been Written Online?



New Military Flashlight Every Patriot Needs to Know About



She Was A Waitress In Cocktail Bar - Now She Owns a Jet



22 Movies Where They Really



Granny Reveals Her Method: Don't Use Botox, Do This Instead



Do This Before Bed And You'll Never Need Gym or Diet



Diabetes Breakthrough That \ Bankrupt Diabetes Industry